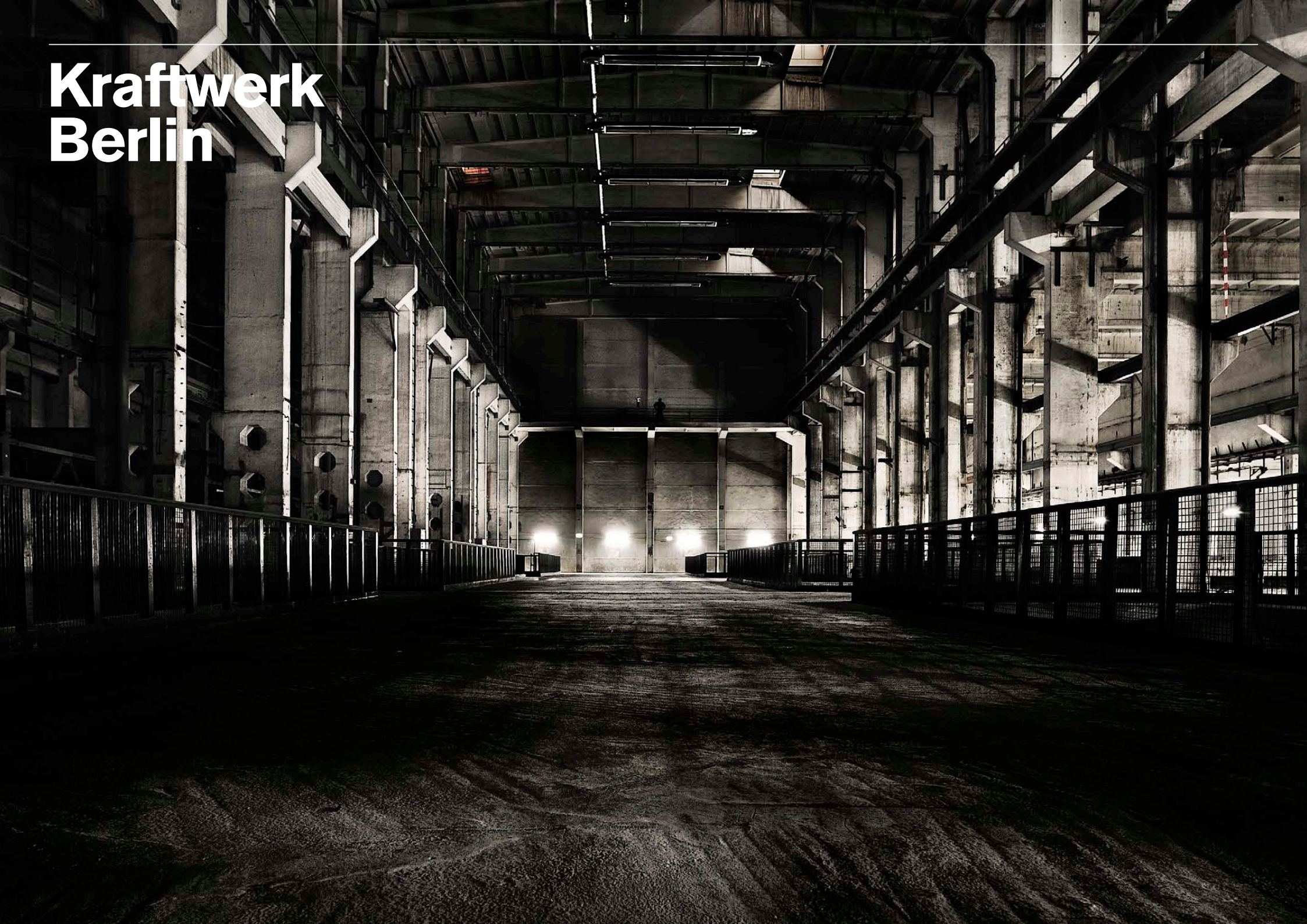


Kraftwerk Berlin



Kraftwerk Berlin

Kraftwerk Berlin

Level 0

Level 1

Level 2

Technical Details

Impressions

Contact

At the centre of Berlin, on the Köpenicker Straße, is the former power station Mitte –a piece of Berlin’s industrial history. Built approximately at the same time as the Berlin Wall during the years 1960-1964, its purpose was to power the former East German regions of Berlin. After the building stood abandoned for many years, it was resurrected by Dimitri Hegemann in 2006 and part of the space reopened as his techno club Tresor.

Today, this formerly silenced Berlin power station is a vibrant place for exhibitions and events. A space resonating with energy.

Kraftwerk Berlin

Kraftwerk Berlin

Level 0

Plan

Level 1

Level 2

Technical Details

Impressions

Contact

Level 0 can be used for exhibitions, fairs or receptions. For larger events, it can be designated for the entrance, ticket sales and cloakroom. In addition to spacious sanitary facilities it offers enough space for photo walls, catering backstage or other required areas for major events.

Usable area: 3,560 m²

Capacity: 2,600 persons

Kraftwerk Berlin

Kraftwerk Berlin

Level 0

Plan

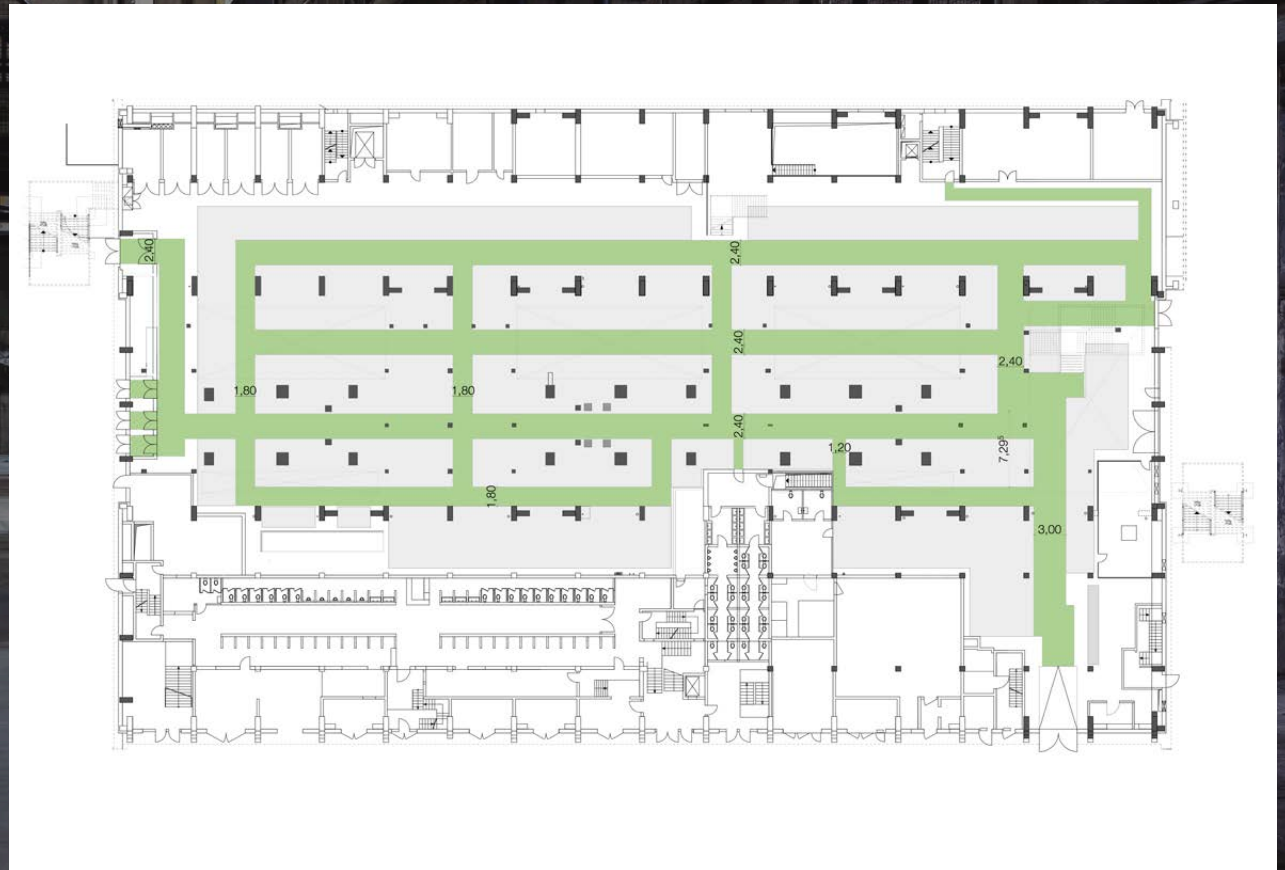
Level 1

Level 2

Technical Details

Impressions

Contact



Kraftwerk Berlin

Kraftwerk Berlin

Level 0

Level 1

Plan

Level 2

Technical Details

Impressions

Contact

Level 1 stretches like an open gallery over the entire length of the building. One can easily gaze up or peer down to the other floors, which are connected to this level by stairs and lifts. The lower ceiling height of one region of this level provides a pleasant, intimate atmosphere that predestines this level for use as a lounge and restaurant area. A closed room with 300 m² and WCs completes this level.

Usable area: 1,200 m²

Capacity: 300 persons

Kraftwerk Berlin

Kraftwerk Berlin

Level 0

Level 1

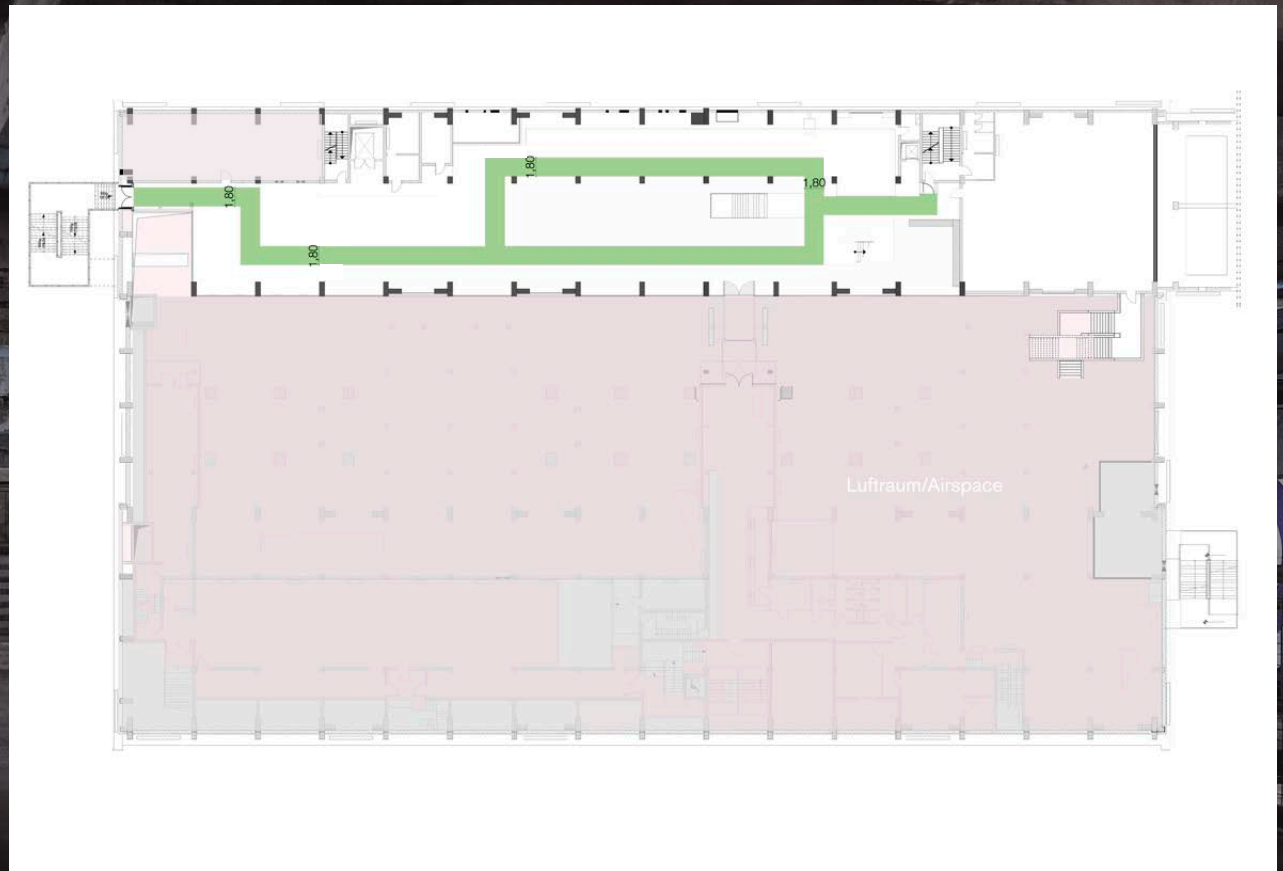
Plan

Level 2

Technical Details

Impressions

Contact



Kraftwerk Berlin

Kraftwerk Berlin

Level 0

Level 1

Level 2

Plan

Technical Details

Impressions

Contact

Level 2 offers a unique experience of space with dimensions of 100 metres in length and a ceiling height of 20 metres. It is equally suitable for large space-consuming installations as well as exhibitions, concerts, performances, galas and presentations. The crane bridge with an admitted loading capacity of up to 20 metric tons can be both used to lift a heavy device up to this level and also as support for technical construction in any position in the hall. The adjacent control room can be used as a back office. A high quality and modern sanitary facility fulfills all the requirements for an exclusive gala public. Usable area: 3,450 m²
Capacity: 1,600 persons

Kraftwerk Berlin

Kraftwerk Berlin

Level 0

Level 1

Level 2

Plan

Staging A

Staging B

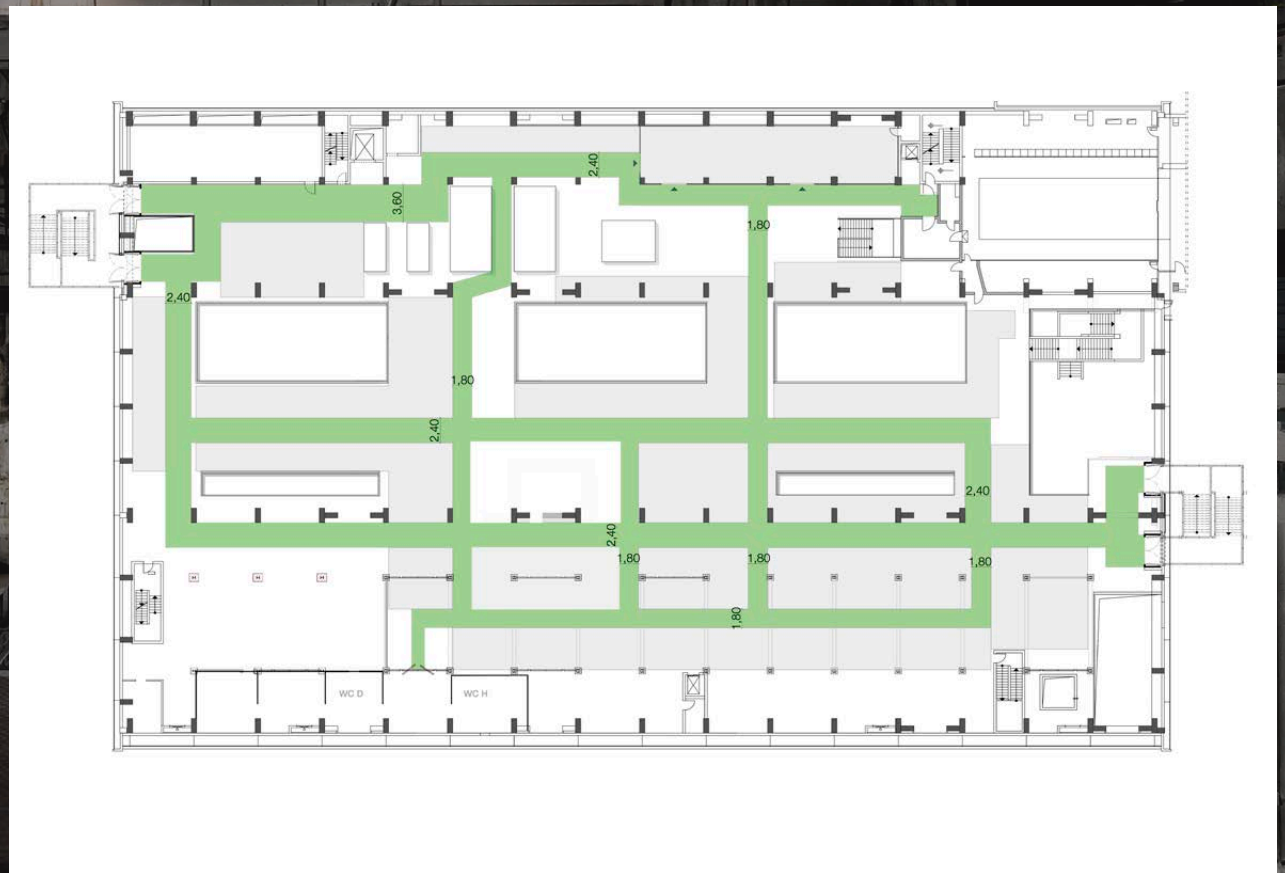
Gala

Gala II

Technical Details

Impressions

Contact



Kraftwerk Berlin

Kraftwerk Berlin

Level 0

Level 1

Level 2

Plan

Staging A

Staging B

Gala

Gala II

Technical Details

Impressions

Contact



Kraftwerk Berlin

Kraftwerk Berlin

Level 0

Level 1

Level 2

Plan

Staging A

Staging B

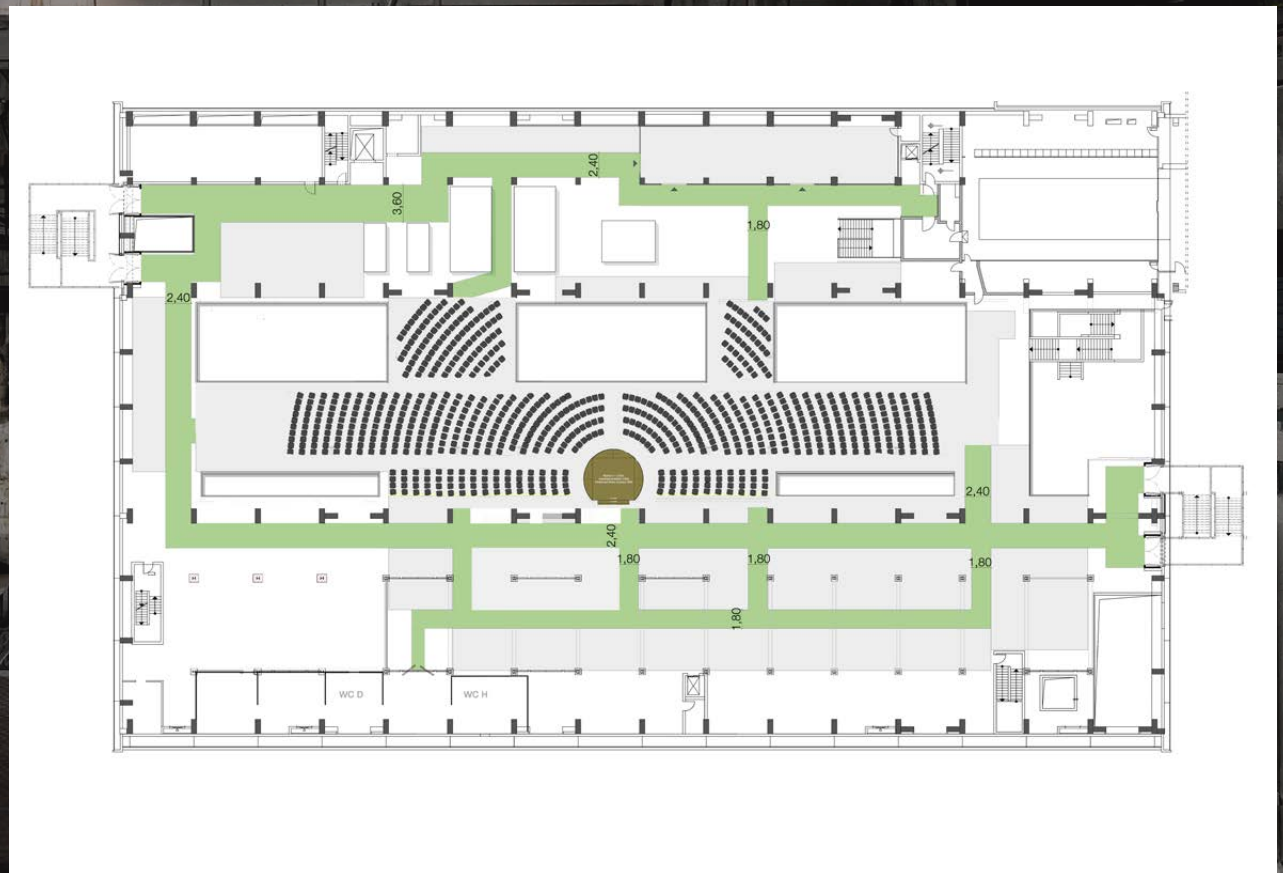
Gala

Gala II

Technical Details

Impressions

Contact



Kraftwerk Berlin

Kraftwerk Berlin

Level 0

Level 1

Level 2

Plan

Staging A

Staging B

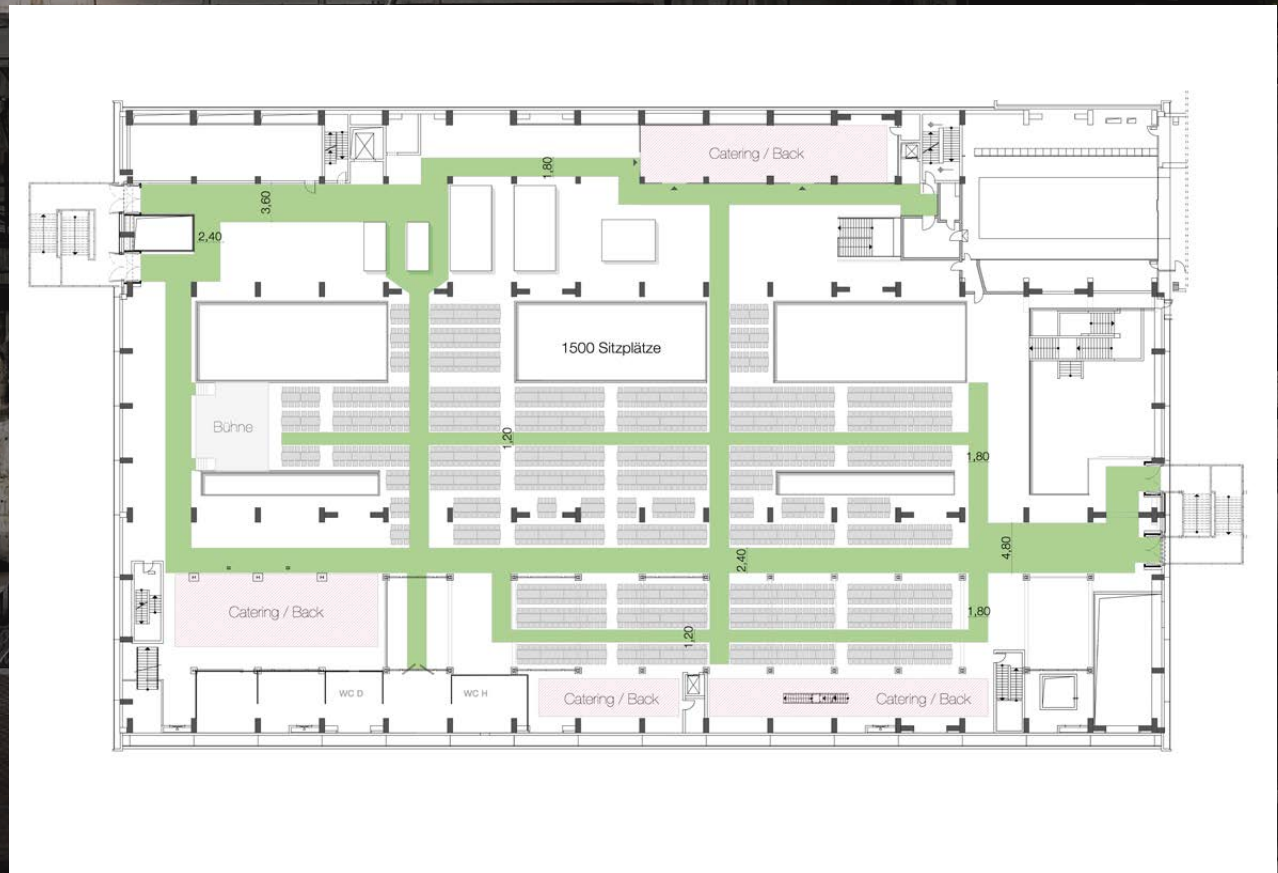
Gala

Gala II

Technical Details

Impressions

Contact



Kraftwerk Berlin

Kraftwerk Berlin

Level 0

Level 1

Level 2

Plan

Staging

Staging B

Gala

Gala II

Technical Details

Impressions

Contact



Kraftwerk Berlin

Kraftwerk Berlin

Level 0

Level 1

Level 2

Technical Details

Impressions

Contact

Technical Details

Electricity:	630 KVA, 125 A CEE on all levels
Loading route:	ground level, 20 m to the freight lift
Freight lift:	capacity 3.2 t, length 2.70m, height 2.20 m, width 2.1 0 m
Passenger lift:	two lifts with disabled access
Heating:	20 ceiling mounted à 40 kW, gas operated and radiators
Crane bridge:	Loading capacity max 10 t
Parking spaces:	24, buses may drive onto the premises

Kraftwerk Berlin

Kraftwerk Berlin

Level 0

Level 1

Level 2

Technical Details

Impressions

Impressions 1

Impressions 2

Impressions 3

Contact



Kraftwerk Berlin

Kraftwerk Berlin

Level 0

Level 1

Level 2

Technical Details

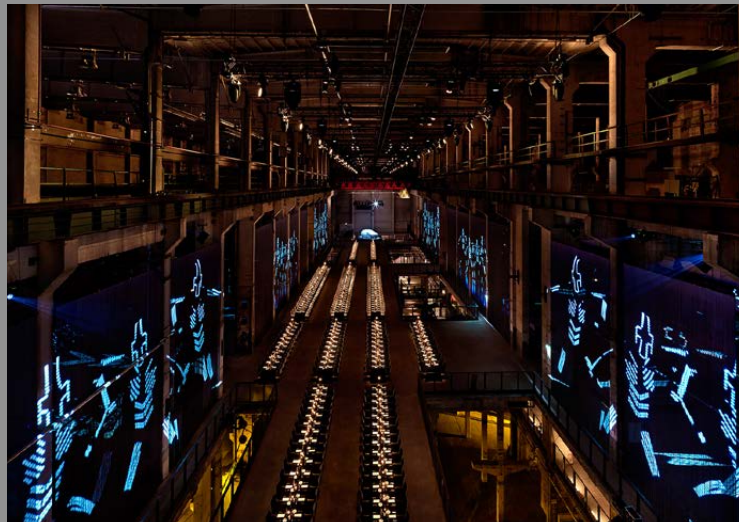
Impressionen

Impressions 1

Impressions 2

Impressions 3

Contact



Kraftwerk Berlin

Kraftwerk Berlin

Level 0

Level 1

Level 2

Technical Details

Impressions

Impressions 1

Impressions 2

Impressions 3

Contact



Kraftwerk Berlin

Kraftwerk Berlin

Level 0

Level 1

Level 2

Technical Details

Impressions

Contact

Kraftwerk Berlin GmbH
Köpenicker Straße 70
10179 Berlin
Germany

contact@kraftwerkberlin.de
+49.30.23 00 51 00
www.kraftwerkberlin.de